

EPX+ Series

10KVA~120KVA 06 Pulse
160 / 200 / 250KVA 12 Pulse
3:3 Phase PF: 0.9

**ISOLATION
TRANSFORMER**
advantage of
NOISE REJECTION



RoHS CE

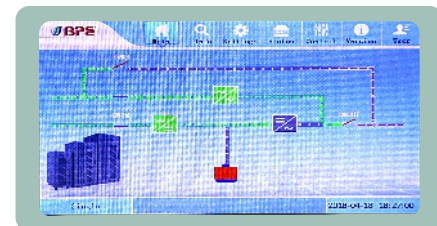


Features:

- Online Double-Conversion.
- DSP Technology Guarantees High Reliability.
- True Inbuilt Galvanic Isolation Transformer Design.
- Control Designed to Withstand all kinds of Loads.
- Intelligent Battery Management to Prolong Battery Life Cycle.
- Redundant Fan Design and Independent Ventilation Enhances Durable Operation Under Harsh Environment.
- Adjustable Battery Numbers.
- Accept Dual-Mains Input.
- Parallel Operation with up to 6 Units (Option).
- Variety of Communication Options Available.
- 5.7 Inch Colour Touch Screen Display for 80~120KVA.
- IGBT based charger for smart battery management & improve input power factor



LED+LCD Screen upto 10~60KVA



6.7" Touch Screen (80~120KVA)

▶ Technical Specifications of EPX+Series 10~250KVA

MODEL / CAPACITY	EPX+3310L32 / 10KVA		EPX+3360L32 / 60KVA		EPX+33100L32 / 100KVA		EPX+33160L32P12 / 160KVA					
	EPX+3320L32 / 20KVA		EPX+3380L32 / 80KVA		EPX+33120L32 / 120KVA		EPX+33200L32P12 / 200KVA					
	EPX+3330L32 / 30KVA						EPX+33250L32P12 / 250KVA					
	EPX+3340L32 / 40KVA											
INPUT												
Rated AC Voltage	380V / 400V / 415V AC (3Ph+N+PE)											
Voltage Range	290V ~ 480V AC \pm 5V											
Frequency Range	50 / 60 Hz \pm 10% Auto Sensing											
Power Factor	0.99											
Walk-in Time	5 ~ 300 Sec. (Configurable)											
BYPASS												
Rated Voltage	380V / 400V / 415V AC (3Ph+N+PE)											
Voltage Range	+ 20%, -30% (Configurable)											
Frequency Range	50 / 60 Hz \pm 10% (Configurable)											
BATTERY												
Battery Voltage	384V DC Standard (360 ~ 408 Configurable)											
Ripple	1%											
Charging Current Max. (A)	0.10C to 0.25C upto 100~300Ah at 100% Load (Configurable)											
OUTPUT												
Rated Voltage	380V / 400V / 415V AC (3Ph+N)											
Frequency Range	Auto Sensing 50 / 60 Hz \pm 1~10% Sync Mode (Configurable), 50/60 Hz \pm 0.1 Hz Battery Mode											
Voltage Regulation	\pm 1%											
Harmonic Distortion (THDv)	\leq 1% Linear Load, \leq 5% Non-Linear Load											
Crest Factor / Transfer Time	3:1 / Zero											
Efficiency	Up to 95% Dual Conversion Mode, 99% ECO Mode											
Overload	\leq 125% for 10 Min, \leq 150% for 1 Min, \geq 150% for 300 ms											
SYSTEM FEATURES												
Parallel	Up to 6 Units (Optional)											
Display	LED + LCD Screen 10-60 KVA			6.7 Inch Touch Screen 80-120KVA			5.7 Inch LCD + LED 160-250KVA					
IP Rating	IP 20											
Alarm / Protection	Short Circuit, Input Under/Over Voltage, Over Temperature, Over Current, Over Load, DC BUS Under / Over Voltage and Battery low											
Audible Alarms	Alarm for batt. Low, DC High, Inverter Under/Over Voltage, Overload, Short Circuit, Fan Failure & UPS Fault											
LED Indicators	Bypass, Mains, Battery and Fault											
LCD Display Information	Input Voltage & Freq.; Output Voltage, Current, KVA, KW, Total Power, PF, Load % Per Phase, Load % Total & Freq.; Bypass Voltage & Freq.; Inverter Voltage & Freq.; Battery Voltage, DC Bus Voltage, Charging Current, Discharging Current, Temperature.											
ENVIRONMENTAL												
Temperature	Operating: 0~45°C, Storage: -10°C ~ 55°C											
Humidity / Altitude	0~95% RH Non-condensing / <1500 M											
Noise	Low Audible Noise Level											
STANDARDS												
Quality	ISO 9000, ISO 14001, OHSAS 18001, ISO 27001, RoHS											
Safety	IEC/EN62040-1											
EMC / Performance	IEC/EN62040-2; IEC/EN62040-3, Complying to CE											
PHYSICAL												
Dimensions WxDxH (mm)	430x830x1100			720x690x1400			880x760x1600			1400x900x1600		
Weight (Kg)	10KVA	20KVA	30KVA	40KVA	60KVA	80KVA	100KVA	120KVA	160KVA	200KVA	250KVA	
	210	220	226	260	390	470	650	690	1460	1540	1580	
COMMUNICATION INTERFACE												
Standard	RS-232											
Optional	SNMP / ModBus / Dry Contact / USB / RS-485											
Monitoring Software	NetAgent Utility v5.8 / View Power / UPSilon 2000 / Muser 4000											

*Specifications are subject to change without prior notice.