

Thermo Scientific HistoStar Embedding Workstation Specifications

| | | |
|-------------------------|----------------------------|---|
| Dimensions | Embedding module (W, D, H) | 25.6 x 23.6 x 16.1 in, 650 x 600 x 410 mm |
| | Cold plate (W, D, H) | 17 x 23.6 x 16.1 in, x 430 x 600 x 410 mm |
| Weight | Embedding module | 55.12 lbs, 25 kg |
| | Cold plate | 44.10 lbs, 20 kg |
| Capacity, Wax Reservoir | | 1.32 gallon, 5 litres |
| Temperatures | Wax reservoir | 122 -158°F, 50 -70°C |
| | Cold spot | 41°F, 5°C |
| | Hot spot | 122 -158°F, 50 -70°C |
| | Tissue storage | 122 -158°F, 50 -70°C |
| | Mold storage | 122 -158°F, 50 -70°C |
| | Cold plate | 10.4°F, -12 °C |

Ordering Information

| Description | | Part Number |
|---|--------------------|-------------|
| HistoStar™ Dispensing Unit with Cold Plate* | 100-120Vac 50/60Hz | A81000002 |
| HistoStar Cold Plate | 100-120Vac 50/60Hz | A81000005 |
| Tamping Tools Kit, Set of 2-1 x 20mm and 1 x 12mm | | A81010030 |
| Spatula Kit, Set of 2 | | A81010031 |
| Cassette Lid Storage Cover | | A81010026 |
| Magnifier Assembly | | A81010032 |
| Footswitch | | AP16629 |
| Electric, Heated Forceps – Red – 1mm tip | | A81010033 |
| Electric, Heated Forceps – Yellow – 2mm tip | | A81010034 |
| Electric, Heated Forceps – Blue – 4mm tip | | A81010035 |
| Document Holder Kit | | A81010036 |

* Includes tamping tools, spatula kit and waste-drain kit.

Efficient embedding requires an efficient paraffin

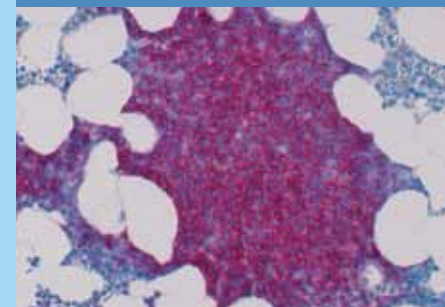


Thermo Scientific HistoPlast Paraffin

Delivery, reliability, unmatched technical support and superior product quality are all part of what you receive with every case of Thermo Scientific HistoPlast Paraffin. Made of paraffin and plastic polymers, these three paraffins deliver excellent processing and yield thin, flat and wrinkle-free sections.

Contact your local Thermo Scientific representative for a side by side comparison.

| Description | Quantity | Cat. No. |
|---------------|---------------|----------|
| Histoplast PE | 8 x 1 kg bags | 8330 |
| Histoplast IM | 8 x 1 kg bags | 8331 |
| Histoplast LP | 8 x 1 kg bags | 8332 |



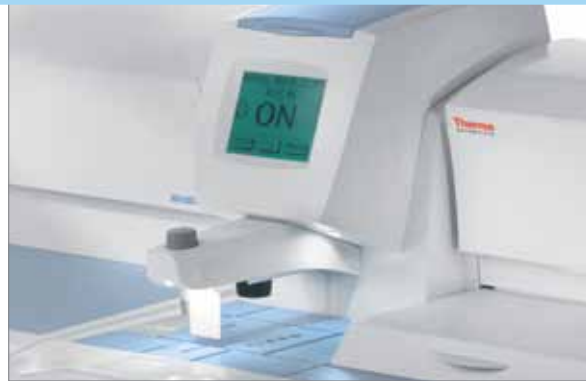
Thermo Scientific HistoStar Embedding Workstation
Be efficient – comfortably!

- Efficient
- Ergonomic
- Well-illuminated
- Integrated ParaTrimmer®

Thermo Scientific HistoStar Embedding Workstation

Well-illuminated, Ergonomic, Efficient

With brightly illuminated work surfaces, cool and contoured arm rests and new features, the Thermo Scientific HistoStar embedding workstation delivers significant improvements in ergonomics and efficiency.



LED lighting – Brightly illuminated work surfaces

Bright Illumination

LED lighting uniformly illuminates the workspace without the clutter of awkward remote lamps. A properly illuminated workspace reduces fatigue and minimizes errors.

- **Lighting intensity is easily user adjustable**
- **Five levels of illumination for both specimen and accessory areas**

Cool and Contoured

All user contact points are smooth and insulated providing a cool and comfortable workspace. Pressure points and uncomfortable heat are eliminated.

High Capacity for High Efficiency

The capacity of the HistoStar™ embedding workstation can keep up with even the busiest laboratories.

- **5 liter paraffin capacity**
- **Cold plate area for 72 base molds**
- **Large heated workspace and specimen holding area**

Any Sample Size Handled with Ease

The HistoStar embedding workstation offers the first adjustable paraffin dispense paddle. A simple adjustment moves the paddle to the most ergonomic position for the user. Even Super Mega Cassettes can be embedded with ease.

Integrated ParaTrimmer®

The HistoStar embedding workstation is the only workstation with a heated wax trimmer built directly into the workspace.

- **Removes excess paraffin at the embedding station**
- **No need for additional equipment**
- **No more wax scrapping at the microtome**

Intuitive User Interface

Large, easy-to-read touch screen display allows quick access to the temperature controls and other parameters. Programmable “sleep” mode saves energy around your workflow.

Dependable Performance

The robust HistoStar embedding workstation design minimizes moving parts, reducing wear and service requirements ensuring dependable performance for years to come.



Ergonomic design – Cool and contoured



High capacity – Maximum productivity



Touch screen – Simple and intuitive



Modular cold plate – Position of optimal workflow

